

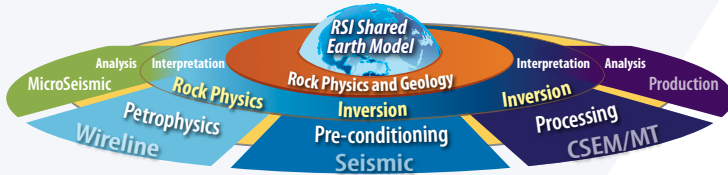
West Africa & Transform Margin

Proven experience and results that reduce exploration risk and uncertainty



Challenges & Approach

RSI has conducted numerous projects focused on West African reservoirs in the Upper Cretaceous (e.g. Santonian, Cenomanian) and Lower Cretaceous (e.g. Albian, Aptian). Experience gained during these projects combined with state-of-the-art proprietary technologies enable our team to deliver reliable estimates of reservoir properties and potential drilling targets to our clients.



Experience

Play types

- Ignitive turbidites in the Albian-Pliocene including:
 - slope levee
 - upper slope confined canyon-fill
 - basin-floor fans
 - toe-thrust complex
- Lacustrine Microbialites & Stromatolites in the Albian
- Fluvial in the Aptian/Albian
- Beach (Foreshore) in the Barremian
- Tilted fault-blocks

Some Clients:

Vanco Energy, Kosmos Energy, Lukoil, Hess, Tullow Oil, Afren Resources, Oranto Oil, C&L Natural Resources, Rialto Energy, Canadian Natural Resources, Hunt Oil, Edison Spa, Dana Petroleum plc

Data:

- Over 190 wells
- 30,000 km² of pre-stack seismic
- 40,000 km² of post-stack seismic

Countries:

- Angola
- Benin
- Cameroon
- Côte d'Ivoire
- Equatorial Guinea
- Gabon
- Ghana
- Guinea Bissau
- Liberia
- Namibia
- Nigeria
- Republic of Congo
- São Tomé and Príncipe
- Senegal
- Sierra Leone
- South Africa
- Togo

Expertise

Rock Physics

- West Africa regional library of modeled shear wave velocity logs
- Regional knowledge applied to every well by recognized experts in the field
- Comprehensive software package for modeling and analysis, iMOSS®, to determine the seismic signatures of reservoir properties

Seismic & Well Data Conditioning

- Geophysical Well Log Analysis (GWLA®) for quantitative interpretation purposes
- AVATAR® seismic data conditioning to remove or suppress undesirable effects for improved inversion and interpretation results

Pre & Post-Stack Seismic Inversion

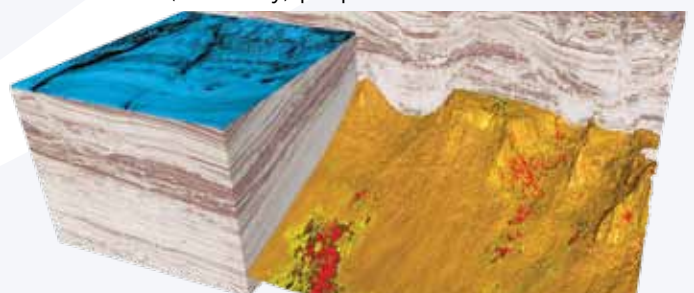
- A well-established strategy for predicting reservoir properties such as lithology, porosity and fluids by inverting seismic data for P and S Impedances and their derivatives
- Extended Elastic Impedance (EEI)

Geological Interpretation

- Results put into context with regional expertise
- Advanced Seismic Attribute Calibration and Seismic Facies Analysis
- Combination of impedance, AVO, Hilbert Transform, Spectral Enhancement and other attributes classified using a proprietary neural network technology (LITHANN®)

Electromagnetic (EM/MT), Inversion & Integration with Seismic & Wells (WISE™)

- By integrating complementary and independent sources of information and exploiting the strengths of each, estimates of rock and fluid properties such as hydrocarbon saturation, lithology and porosity can be obtained with greater confidence than from any single data type
- WISE capitalizes on the independent assessment of reservoir prospectivity by integrating the elastic (seismic) and electric (resistivity) properties of the subsurface



West Africa & Transform Margin Experience



"We have collaborated with the Rock Solid Images team on numerous of our exploration initiatives in West Africa, including Ghana's Jubilee Field. We have been impressed with their commitment to technical excellence and customer satisfaction and are pleased to select them for this important role." **Kenny Goh, Kosmos Energy Senior Vice President and partner, and Robin Sutherland, Tullow Exploration Manager.**

"This work unequivocally demonstrated the impact that rigorous rock physics analysis can make on risk reduction in rank exploration areas such as those that characterize our deepwater West African and Ukrainian exploration portfolios." **Ronald L. Wallace, Senior Vice President of Exploration, Vanco Energy Company.**



Selected Wells:

- Cote d'Ivoire**
- Acajou-1x
- Acajou-2x
- Acajou-2x st
- Assinie 1-X
- B-3X
- Baobab-1x
- Baobab-2x
- East Assinie 1-X
- Gazelle-2
- IVCO 22
- IVCO 24
- IVCO-13
- IVCO-18
- IVCO-26
- Kossipo-1x
- Mafia-1
- Mahi-A
- ORCA 1X B1S
- Zaizou-1x

Ghana

- Ankobra-1
- Cuda
- Banda-1
- Dahoma-1R
- Dolphin
- Dzata-1
- Dzata-2A
- Hyedua-1
- Hyedua-2
- Mahogany 1

Mahogany 2

- Mahogany 3
- Mahogany 4
- Mahogany 5
- Mahogany Deep 2
- NAK-IX
- Nuevo Accra-Keta
- 1-X
- Odum 1
- Odum 2
- Owo 1

S Dixcove 1X

- Tano South 3a
- Tarpon 1-1X
- Teak-1
- Teak-2
- TEMA-1
- Tweneboa-1
- Tweneboa-2
- WCTP-2X
- WCTP-3X
- West Tano 1X

WT1-X

- Benin**
- Aje-2
- Fifa-1
- Hihon 1
- IKE-1
- Sota 1
- Guinea**
- Buttes-1 (GU2-B1)
- Gambia**
- Jammah #1

Liberia

- H-3 #1
- AMOCO S-3-1
- Senegal**
- FAUCON 1
- RF-02

Sierra Leone

- AMOCO A1-2
- MOBIL A-1
- Togo**
- Barracuda - 1
- Capitaine