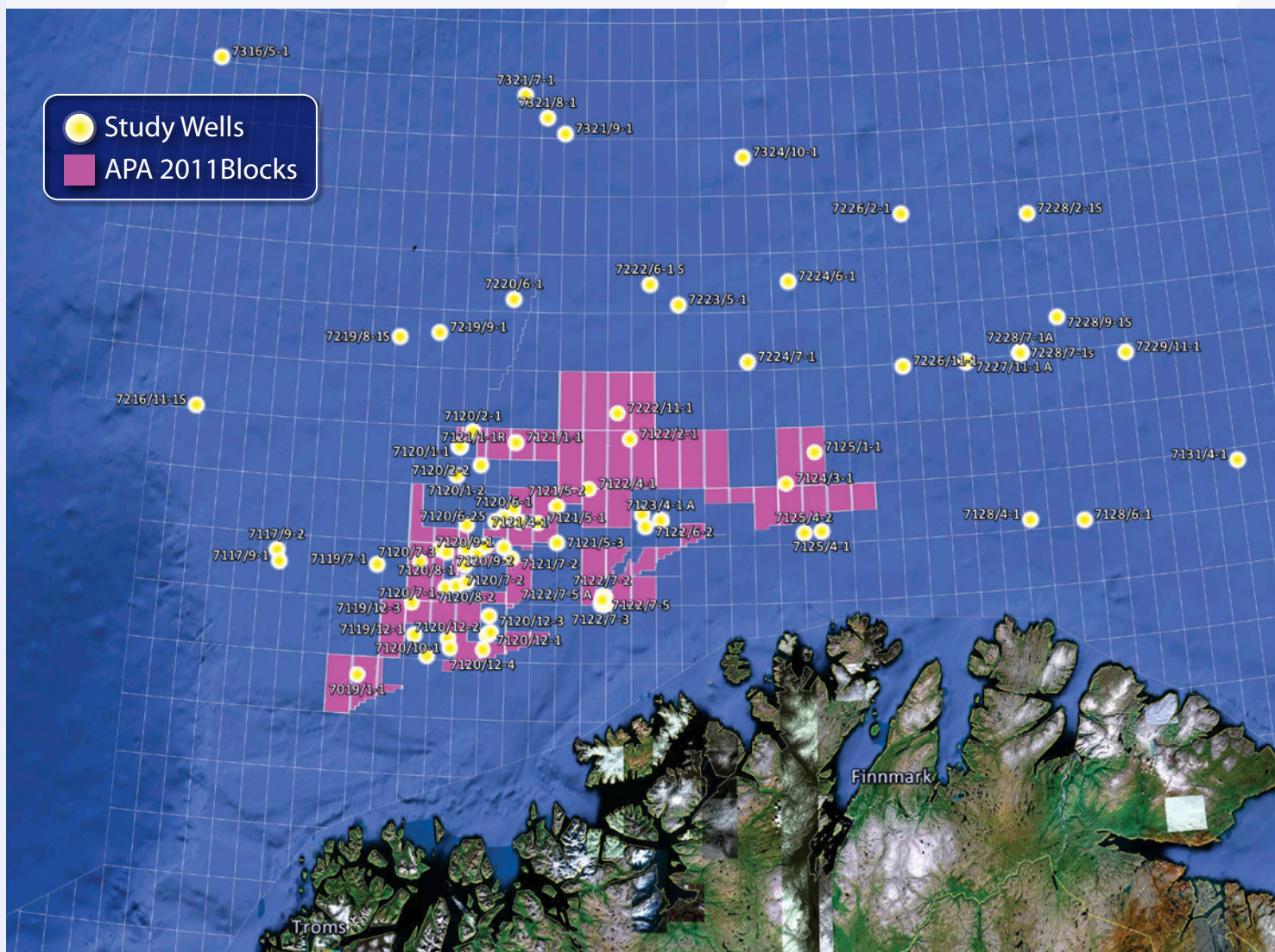


Barents Sea Rock Physics & Seismic Response Atlas



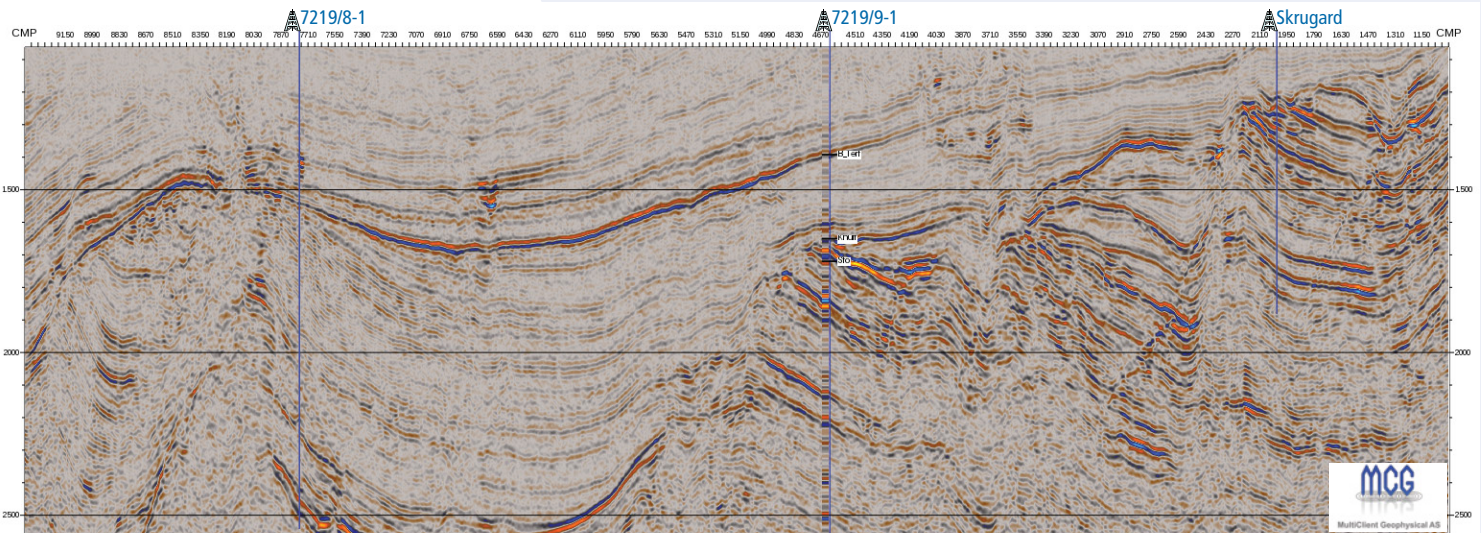
Following the Skrugard discovery in the Bear Island Fault Zone, RSI commenced work on the 79-well Barents Sea Rock Physics and Seismic Response Atlas. Now complete, this study represents an indispensable reference tool for understanding fluid signatures in this trend and elsewhere in the Barents Sea.



Deliverables:

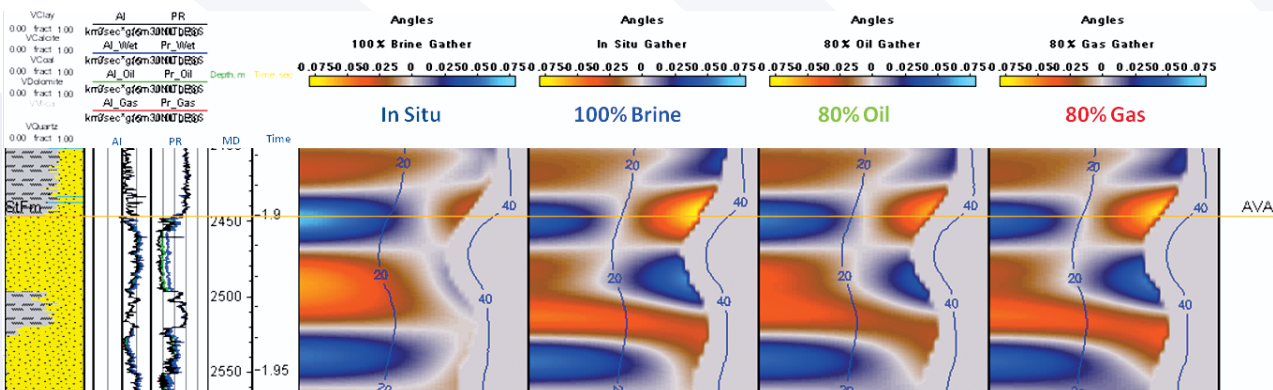
- Geophysical well log analysis (GWLA®) – top-to-bottom log conditioning for QI purposes
- Comprehensive EEI analysis of reservoir properties of the lower/middle Jurassic Stø Formation
- Standard log displays for whole log and zone(s) of interest
- Standard rock physics crossplots, AVO analyses for all reservoirs, Wedge models
- Depth trends, Full offset synthetics in situ/fluid models
- Written report and Log data delivered in LAS format/seismic synthetics delivered in SEG-Y format
- Optional welltie displays in conjunction with MCG and 1D EM modeling.

Barents Sea Rock Physics & Seismic Response Atlas



The 79 wells included in the Barents Sea Rock Physics & Seismic Response Atlas:

7019/1-1	7120/5-1	7120/10-1	7121/7-1	7123/4-1 S	7222/11-1	7228/9-1S
7117/9-1	7120/6-1	7120/10-2	7121/7-2	7124/3-1	7222/6-1 S	7229/11-1
7117/9-2	7120/6-2S	7120/12-1	7122/2-1	7125/1-1	7223/5-1	7316/5-1
7119/7-1	7120/7-1	7120/12-2	7122/4-1	7125/4-1	7224/6-1	7321/7-1
7119/9-1	7120/7-2	7120/12-3	7122/6-1	7125/4-2	7224/7-1	7321/8-1
7119/12-1	7120/7-3	7120/12-4	7122/6-2	7128/4-1	7226/11-1	7321/9-1
7119/12-2	7120/8-1	7121/1-1	7122/7-1	7128/6-1	7226/2-1	7324/10-1
7119/12-3	7120/8-2	7121/4-1	7122/7-2	7131/4-1	7227/11-1 A	
7120/1-1	7120/8-3	7121/4-2	7122/7-3	7216/11-1S	7227/11-1 S	
7120/1-2	7120/8-4	7121/5-1	7122/7-5	7219/8-1S	7228/2-1S	
7120/2-1	7120/9-1	7121/5-2	7122/7-5 A	7219/9-1	7228/7-1 B	
7120/2-2	7120/9-2	7121/5-3	7123/4-1 A	7220/6-1	7228/7-1A	



For more information on this study or the Mid-Norway Atlas, please contact Gareth Taylor: gareth.taylor@rocksolidimages.com or +1-713-783-5593

