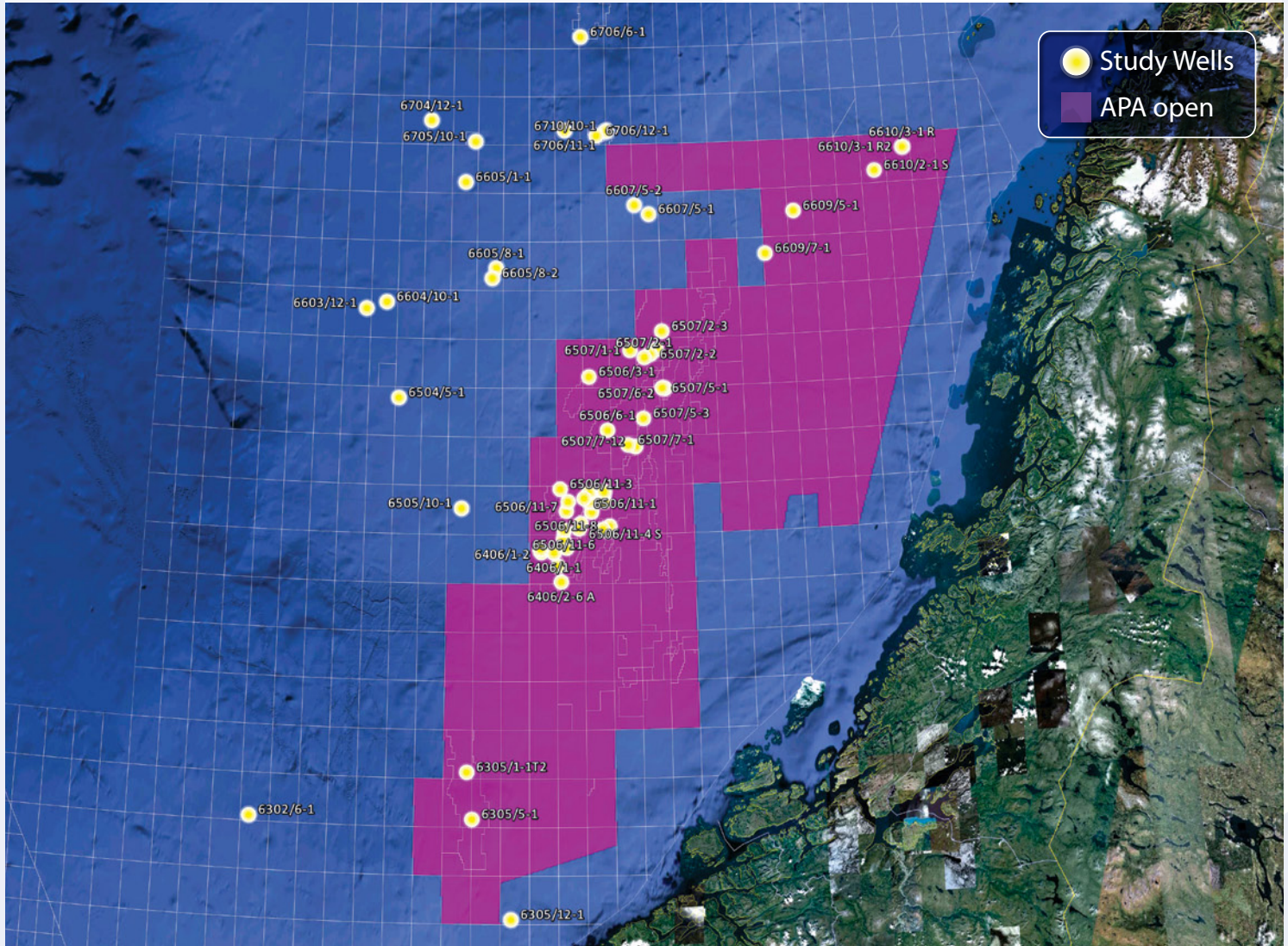


Mid-Norway Rock Physics & Seismic Response Atlas



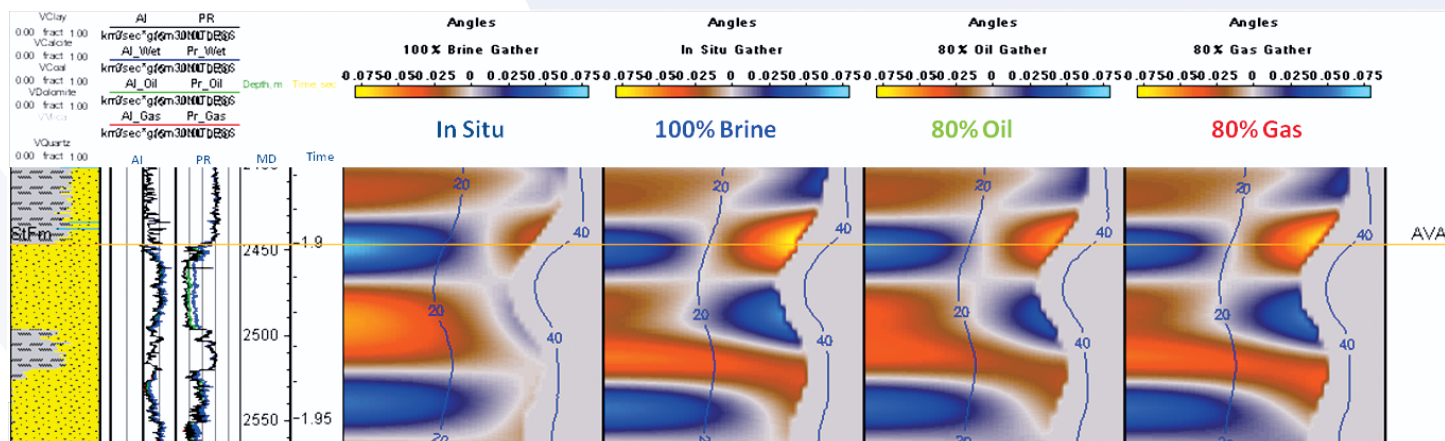
Following the Successful Release of the Barents Sea Study, RSI Announces the Mid-Norway Rock Physics and Seismic Response Atlas for the Cretaceous Springar, Nise, Lysing and Lange Formations.



Deliverables:

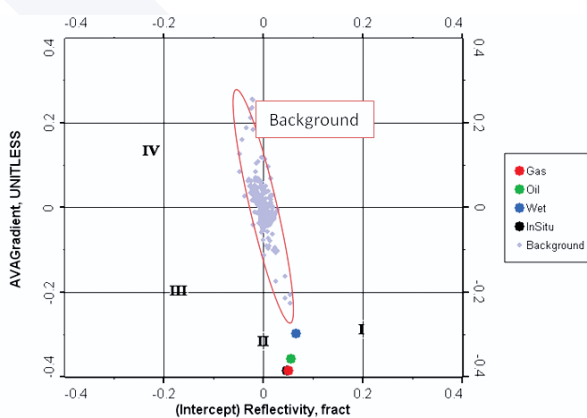
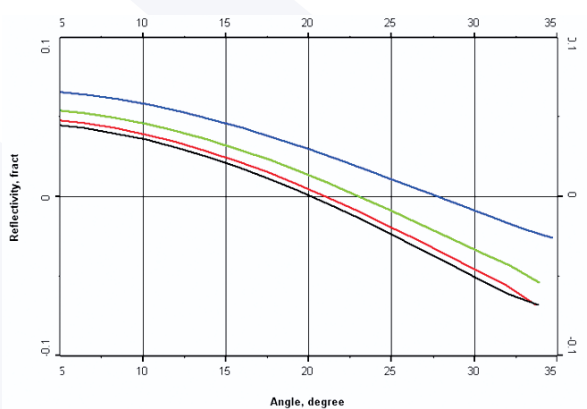
- Geophysical well log analysis (GWLA®) – top-to-bottom log conditioning for QI purposes
- Standard log displays for whole log and zone(s) of interest
- Standard rock physics crossplots, AVO analyses for all reservoirs
- Depth trends, full offset synthetics in situ/fluid models
- Written report and log data delivered in LAS format/seismic synthetics delivered in SEG-Y format
- Optional welltie displays and 1D EM modeling.

Mid-Norway Rock Physics & Seismic Response Atlas



The 61 wells included in the Mid-Norway Rock Physics & Seismic Response Atlas:

6302/6-1	6504/5-1	6506/12-1	6507/2-1	6605/1-1	6705/10-1
6305/1-1T2	6505/10-1	6506/12-12 A	6507/2-2	6605/8-1	6706/11-1
6305/5-1	6506/3-1	6506/12-12 S	6507/2-3	6605/8-2	6706/12-1
6305/12-1	6506/6-1	6506/12-3	6507/2-4	6607/5-1	6706/6-1
6406/1-1	6506/11-1	6506/12-4	6507/5-1	6607/5-2	6707/10-1
6406/1-2	6506/11-2	6506/12-5	6507/5-3	6609/5-1	6710/10-1
6406/1-4	6506/11-3	6506/12-6	6507/6-2	6609/7-1	
6406/2-3	6506/11-4 S	6506/12-7	6507/7-1	6610/2-1 S	
6406/2-5	6506/11-6	6506/12-8	6507/7-12	6610/3-1 R	
6406/2-6 A	6506/11-7	6506/12-9 S	6603/12-1	6610/3-1 R2	
6406/2-7	6506/11-8	6507/1-1	6604/10-1	6704/12-1	



For more information on this study or the Barents Sea Atlas, please contact
Gareth Taylor: gareth.taylor@rocksolidimages.com or +1-713-783-5593